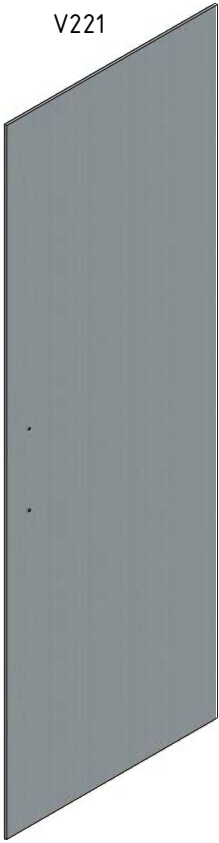


1. 1x
V221



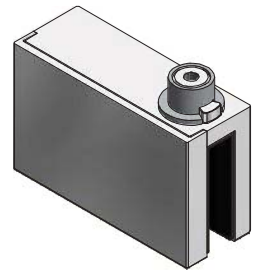
2. 1x
V220



3. 1x LEFT
MA7891



4. 1x RIGHT
MA7890



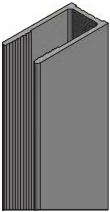
5. 1x LEFT
MA7893



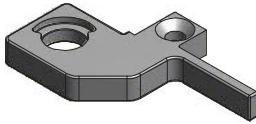
6. 1x RIGHT
MA7892



7. 1x
MA7187



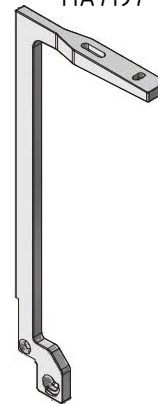
8. 1x
MA7198



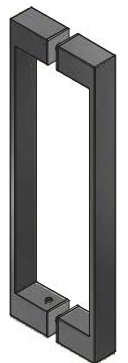
9. 1x
MA7203



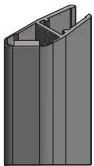
10. 1x
MA7197



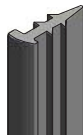
11. 1x
MA7196



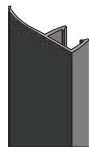
12. 1x
MA7185



13. 1x
MA7186



14. 1x
MA7193



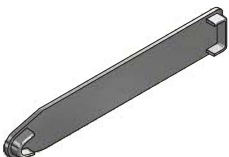
15. 2x
ND01-2420



16. 1x
MA8019



17. 1x
MA7209



18. 1x
MA7211



19. 2x
MA7210



20. 1x
MA7215



21. 5x
M0511



22. 5x
M0811



23. 4x
M0827



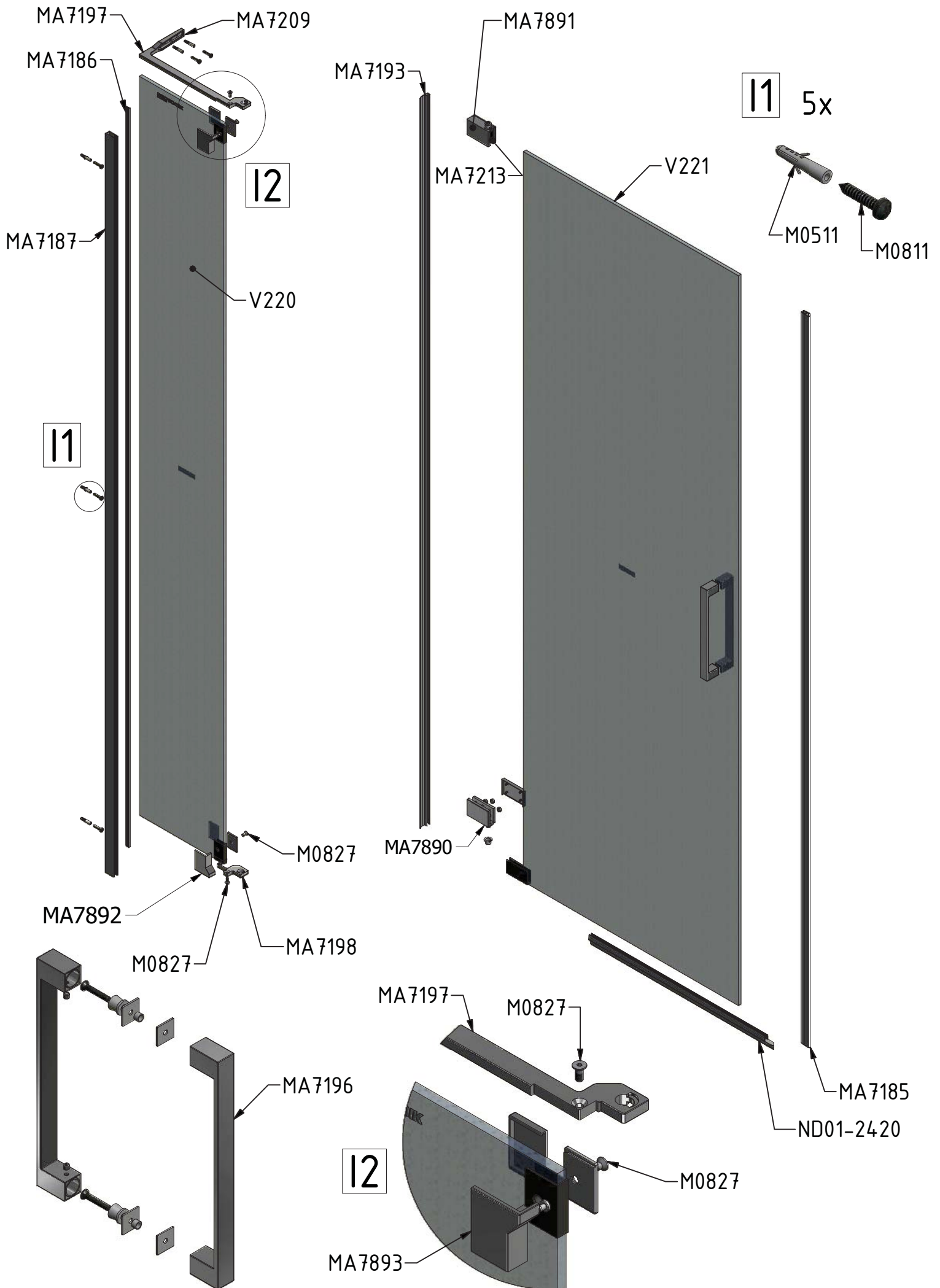
24. 2x
MA7222



25. 2x
MA7224



USE ONLY FOR
GDO1N+GDO1N
VARIANT



| | | | |
|------|------------------------|-------------|-----------|
| V220 | 800;900;1000;1100;1200 | Transparent | ND01-3621 |
| V221 | 800 | Transparent | ND01-3622 |
| | 900 | | ND01-3623 |
| | 1000 | | ND01-3624 |
| | 1100 | | ND01-3625 |
| | 1200 | | ND01-3626 |